

# Filwood in Motion: Residency Artist Pack



**Funded by  
UK Government**

# Contents

Overview	3
Why?	4
Aims and Guiding Principles	5
LUF Projects Overview	6
Stakeholders - Who's Who & Responsibilities	7
How Will Artists Work?	8
Community Co-creation & Audiences	9
Filwood Broadway Residency Overview	10
Who Is This Residency For?	11
Priority Themes	12
Responding to the Community	13
Priorities from LUF Project Leads	14
Inspirations from Other Projects	15
Timeline & Potential Outcomes	16
How to Apply, Contacts & More Information	17
Application Questions	18

# Overview



This Artist Residency for Filwood Broadway will see artist/s commissioned to make work with the community of Knowle West, South Bristol across a year of regeneration.

This residency will see an artist embedded in the community for 1 year from January 2025, with an artist fee of £30,000.

In 2023, Filwood Broadway was awarded investment of £14.5 million from the Levelling Up Fund (LUF). This investment will be used to transform Filwood Broadway High Street including amending the road layout to create more space for people, revamping Filwood Community Centre, expanding play opportunities for young people, and building new homes. This artist residency is majority funded through this LUF project.

[Find out more about each of the LUF projects planned for Filwood Broadway here.](#)

Bristol City Council's (BCC) planning conditions state that large building schemes have an obligation to give a percentage of the total build cost to public art at that site or in that community. Although there are several separate construction elements to the LUF projects, the Filwood Broadway teams are taking a joined-up approach.

This means the different build elements are pooling public art contributions and resources, and that all stakeholders are seeing this as a cultural zone with public art planning conditions being met through the appointed artist/s working across the whole of Filwood Broadway.

Knowle West Media Centre (KWMC) are leading on commissioning public art across Filwood Broadway during the upcoming LUF works, in close collaboration with Bristol City Council's Arts Development Team and other stakeholders (see page 7).

KWMC are a place-based arts and community tech organisation who have been working in Knowle West, Bristol, for 26+ years with artists and the local community.

KWMC has 2 sites in Knowle West; a Maker Space (KWMC: The Factory) with a variety of digital fabrication kit and a Studio Hub with postproduction, music recording and other creative tech facilities.

Our mission is to: Make fair and thriving neighbourhoods together, with arts, tech and care. We do this by working as part of a strong neighbourhood ecology, bringing our practices of co-design to the Knowle West Alliance (a consortium of local organisations). We believe in the transformative potential that arts practices bring to imagining and co-creating preferable futures.



# Why?



Artists working across Filwood Broadway as a cultural zone will contribute to a greater sense of cohesion on the whole street.

Filwood public art projects will have a holistic view of all the different works, and can help to stitch the different parts together, ensuring that the spaces speak and relate to each other.

Artists can help navigate change and bring the local community along for the journey.

Artists can bring the community in to be a part of the change in a tangible way, helping to instil a sense of ownership and custodianship of place.

KWMC have been working locally over a long period of time, developing relationships and building community trust.

KWMC believe that embedding an artist in a community over a sustained period of time will mean that artist/s can genuinely get to know and co-create with the community and that the residency will lead to imaginative work that we couldn't have dreamed of.

Knowle West has a unique public art manual that priorities a people-led approach. Public art starts with and includes community all the way through the process.



Tit for Tat circus theatre company at Knowle West Fest 2024. Photo credit: Ibi Feher.



# Aims & Guiding Principles

The appointed artist(s) will need to:

- Work to 'The Manual: A Public Art Strategy for Knowle West' which encourages artists to:

- Create high quality artworks for Knowle West that will provide a physical, cultural and social legacy
- Use the character and resources of Knowle West within commissions
- Embrace the local and international
- Contribute to an environmentally and socially sustainable Knowle West

There are also 12 inspiration themes in the manual:

- |                                 |   |
|---------------------------------|---|
| • Tell a story of Knowle West   | • Connect Knowle West, Bristol, and beyond            |
| • Make the most of fallow       | • Welcome   |
| • Influence change              | • Encourage use of green space                        |
| • Imagine the future            | • Adapt infrastructure                                |
| • Intervene in community space  | • Build on local character: mark the new with the old |
| • Make hay while the sun shines |   |
| • Play                          |   |

- Follow BCC's 5 Key Principles ([see BCC's Public Art Commissioning Toolkit here](#)):

- Social engagement
- Vibrant place making
- Sustainability
- Quality urban design
- Creative ecology

- Align with BCC's Social Value Aims

- Reduce poverty and inequality
- Enhance community, economic and social wellbeing
- Increase the city's resilience and environmental sustainability

- Follow emerging principles for Filwood Broadway work:

- Help navigate a time of great change in the local community.
- Work is co-created, ensuring community voice, leadership, and story are at the heart.
- Increase footfall to the high street.



# LUF Projects

What's Happening Over 2025?

**1** Former Filwood Cinema  
Mixed Use Development  
30 Affordable Homes  
2 Ground Floor Retail Units

**2** reCREATE Filwood  
Public Realm  
New Play Area  
Changing Road Layout  
More Public Space

**3** Active Communities  
Scheme: New Multi-Use  
Games Area  
New Games Area on Filwood  
Playing Fields (South of this  
Image)



**4** Filwood Community  
Centre Expansion and  
Refurbishment  
Under Construction in 2025

**5** Westside (4-16  
Filwood Broadway)  
Proposed: 18 Affordable Homes  
& Retail Space

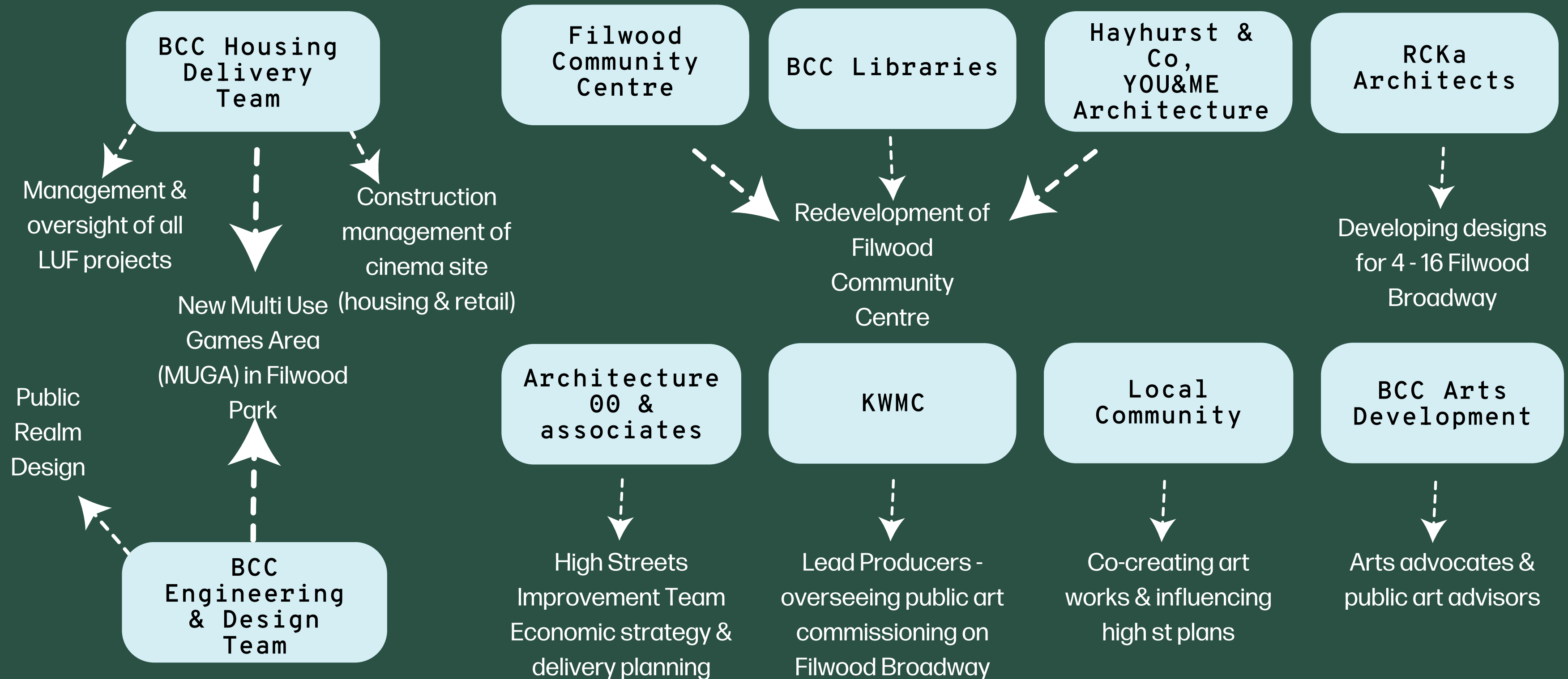
**6** Filwood High Street  
Delivery Plan and  
Improvements  
Connecting regeneration with  
local economic development

Individual projects in the Transforming Filwood Broadway  
Levelling Up Funded project.  
Image: Bristol City Council



# Stakeholders

Who's Who & What Are They Responsible For?



# Who will artists work with?

Artist(s) /  
Creatives

BCC Arts  
Development

Public Art advocates and  
project advisors.  
Overseeing public art on  
Filwood Broadway.

LUF Project  
Teams

Contribution of public art  
ideas and research.  
Potential for  
collaborations.  
LUF Teams have  
contributed to this  
commissioning process.

Knowle West  
Media Centre:  
Lead Producers

Main artist contact,  
support, and care.  
Linking / bridging with the  
community and other  
stakeholders.  
Curation advice.

Community

Local residents.  
Local workers.  
Visitors.  
It is essential that work is  
co-created with the  
community.

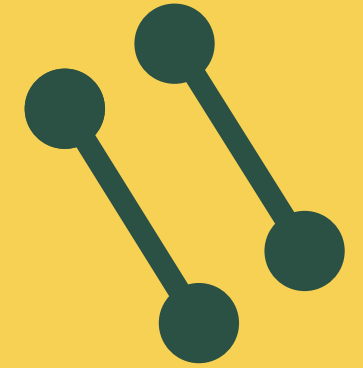
Additional  
Creative  
Expertise

It may be necessary to  
bring in additional  
expertise and artists to  
realise different public art  
elements as they emerge.  
There is additional budget  
for this.





# Community Co-Creation



## Community Co-Creation

Co-creating means starting with a community need, ask or want and then working with people creatively to address these.

Artists working in this way need to be flexible to respond to community desires.

It is community led rather than 'done to' with people having decision making agency and power.

It places people as experts in their community and life experiences.

## Co-Creators

One priority group are local young people and local residents.

Beyond this, we do not have pre-determined groups to work with for this residency, aside from the fact that the prime location will be on Filwood Broadway.

People to work with could include:

- Local businesses
- Regular High Street users
- Local organisations / groups that meet on the Broadway / nearby
- Library users (the library is on Filwood Broadway)
- Contractors and build crews
- Emerging local artists (mentoring opportunities)

The appointed artist(s) will be supported by KWMC to identify who participants and audiences might be, and to work with those to shape the overall process and what is created during the course of the year.

# Filwood in Motion Residency Overview

This residency is an invitation for an artist/s to embed themselves in Knowle West, particularly Filwood Broadway during construction and disruption, for the year of 2025, as an embedded artist making artwork in and with the community.

This residency will happen alongside the works taking place, that are disrupting and regenerating Filwood Broadway. The artist/s will:

- Bring communities together to inspire and lead creative interventions, temporary programmes and opportunities for social gatherings.
- Provide interesting ways of storytelling and keeping local people informed of developments as they happen.
- Through these processes propose potential semi-permanent or permanent outcomes in the public realm.

Within the residency you might want to explore:

- Co-creating social events that provide opportunities for people to get together (eg, pop up kitchens / legacy events from Filwood Fantastic or recent artist residencies)
- How this residency can tell the story of what's happening on Filwood Broadway across the construction period (eg, youth led pop-up podcast / imaginative temporary hoardings)
- How might arts-led approaches activate the changing public realm?
- How can we bring arts and creativity into the day to day?
- What pilots and tests could happen as part of this residency that could inform future uses of space on Filwood Broadway?
- How can arts practices help make community dreams more tangible?
- How could digital layers connect with the physical changes?
- What is the relationship between wellbeing and environment in the context of our public realm?
- How do we connect and make space for other species, animals, wildlife, and biodiversity?
- How does the history of Filwood Broadway and the area influence its present and future?
- Reusing existing historic and locally sourced materials.





# Who is this residency for?

This residency is for an individual / pair / collective of artists or creatives who want to embed themselves in Knowle West over the course of 1 year.

We are looking for creative/s that work in socially engaged or participatory ways and want to explore, experiment, play and make artwork in and with the local community. We invite you to bring your fresh perspective, skills and knowledge to learn from and work with the local community.

We are looking for artists who have:

- Practices that engage with areas such as urban intervention, social action, transforming public space.
- Experience of working in and with communities. It is essential that you have a socially engaged practice.
- 5+ years experience working in socially engaged arts.
- Experience of, or interest in, digital technologies and community tech.
- A collaborative approach to making.

We will consider proposals from artists / creatives working in any medium where the above applies. For example, you might be an artist working in performance, sound, film, creative technologies, maker or other creative.

Whatever your practice please note that whilst temporary interventions are actively encouraged, we are looking for the artist to produce lasting outcomes through the residency. We are open to ideas for this from book/digital artworks to proposals for outcomes in the public realm. The ambition is that this residency could inform further semi-permanent or permanent outcomes.

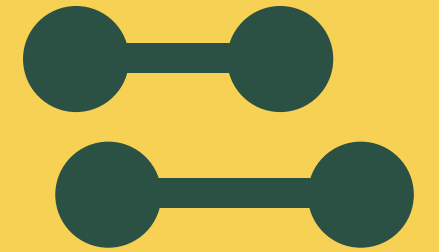
We understand that you might need to bring in additional artist expertise throughout the year and have separate budget to support this.

Although artists are welcome to apply from any location, we have an expectation that the appointed artist will truly embed themselves in the community. There is no budget for accommodation, there is a small travel budget.





# Priority Themes



The following 2 pages show some of what we've heard from members of the community and other stakeholders. The appointed artist/s will receive an inspire pack which expands on these in more detail.

The main themes that should be considered through all projects and outputs are:

- Knowle West's heritage and culture should be represented. The area's past and present should influence its future.
- Community voice and leadership - particularly young people who are the future custodians of Filwood Broadway.
- Consider biodiversity and climate change.
- Centre safety and belonging.
- Use local materials and suppliers, and reuse what there already is.
- Learned skills through participation.
- Enhance peoples health and wellbeing.





# Responding to the Community

What have we heard that will influence and shape the Filwood Broadway Public Art Works?

There will be a time of disruption. Filwood Community Centre staff will temporarily move operations. Access to the high street will be restricted

More visual communications in the public realm to hear what's happening and keep informed eg, display boards and hearing stories told by local people

Importance to have opportunities to come together during the disruption phase of construction

More food opportunities. Creative ways to cook and eat together. Social spaces to share food

Different activities happen throughout the year - the space needs to be flexible to accommodate this

To see quick results, stuff actually happening

Social activity spaces / pop up events / flexible spaces. Eg, a container that has storage but also a café

People want space to sit and hang out, and be together. Somewhere that feels safe

History and story gathering cut across everything  
Pride of place in local heritage  
Significance of cinema, swimming pool, & notable local people

Skills and paid job opportunities for local people

Young people need to be at the heart of these creative projects, as they'll be custodians of that space going forward.

Space to play - for young people and adults  
Eg, ping pong table or visual infrastructure that encourages play

Creative, atmospheric lighting

A street that looks cohesive, connected, and attractive: signage and shutters

'Giving opportunity for the community to accept change in a positive way.'

It's hard to find your way around if you don't know where you're going

Some physical objects from the street exist - old projector and bricks from the cinema site. Potential to use these materials

# Priorities from LUF Project

## Leads

Give glimpses of what is to come (physical peepholes as well as glimpse into future about long term – 'meanwhile' to 'worthwhile')

Think creatively about hoardings and messaging

Output that supports current / meanwhile / future activities at Filwood Community Centre

Sign off planning condition 'public art strategy and implementation



Use local artists, encourage ownership, what does the area mean to them?

Important that all spaces speak to each other



Slow entertainment. Watching construction unfold

Make the most (creatively and sustainably) – of 'waste'

Skills and employment - encouraging young people, women, ex-offenders etc. into construction.



Use historic materials and tell the stories of Knowle West past as we look to the future



# Inspirations from Other Projects



Festival of Toil,  
muf architecture

Co-design and  
making of cutlery  
for shared meals

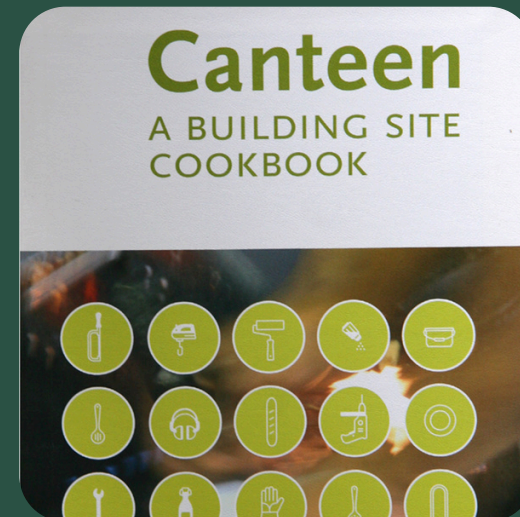


WeCanMake Chatshow

Local people as the hosts  
and guests, "Knowle  
Westers sorting out their  
housing"

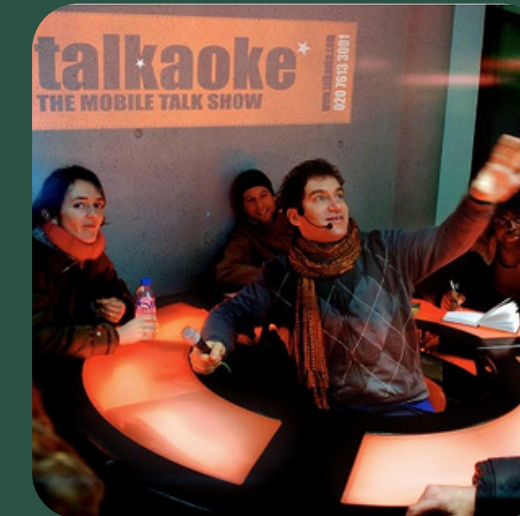
Canteen, Neville Gabie

Bringing builders and  
local people together to  
create a recipe book and  
eat together



Talkaoke,  
The People Speak

Pop-up chat-show, local  
people as hosts



Playful Anywhere

Pop-up play boxes and  
interventions

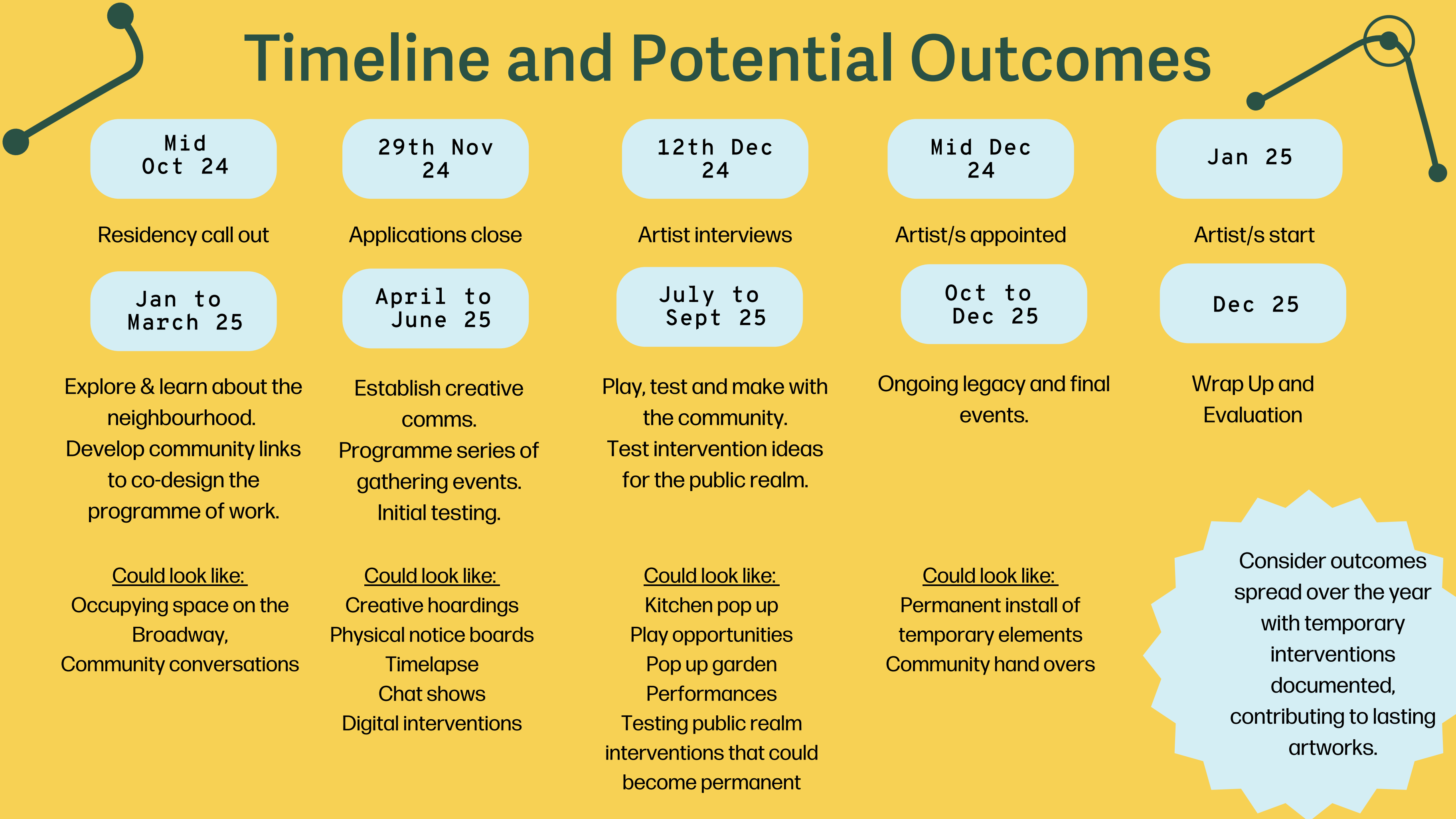


Chrisp Street on Air,  
The Decorators

Pop-up radio station  
and boxing matches  
in a market space



# Timeline and Potential Outcomes





# How to Apply, Contacts and More Information

To apply for this residency please complete this [application form which can be found here](#). We also welcome applications in other formats, please get in touch to chat to us about this if you'd like to use an alternative to a form (this will not affect likelihood of being selected).

All applications will be assessed according to the same criteria and submitting in a different format will not affect your chances of being selected.

The closing date is midnight on Friday 29th November 2024.

Interviews will take place on Thursday 12th December with options of online or in person.

For more information or an informal chat about the residency, please contact Jasmine Loveys, Public Realm Producer at Knowle West Media Centre on:

Jasmine.Loveys@kwmc.org.uk or call / message 07561 036175



# Application Questions

For reference, these are the questions that will be asked on the application form.  
Please only apply using the form and do not submit answers via email.

Contact details

Tell us about you, your practice, and the way you work (max 500 words)

Tell us about a previous project which demonstrates your ability to work in a socially engaged way (max 500 words)

Tell us about your approach to collaborating with partners, communities, and stakeholders (max 500 words)

Why are you interested in this residency (max 500 words)

A link to a website with examples of your work

A link to your artist CV





# Thank you for reading.

